



**AVIDHIFI**

# INGENIUM **SE**



**USER MANUAL**



SCAN HERE FOR  
**VIDEO GUIDE**

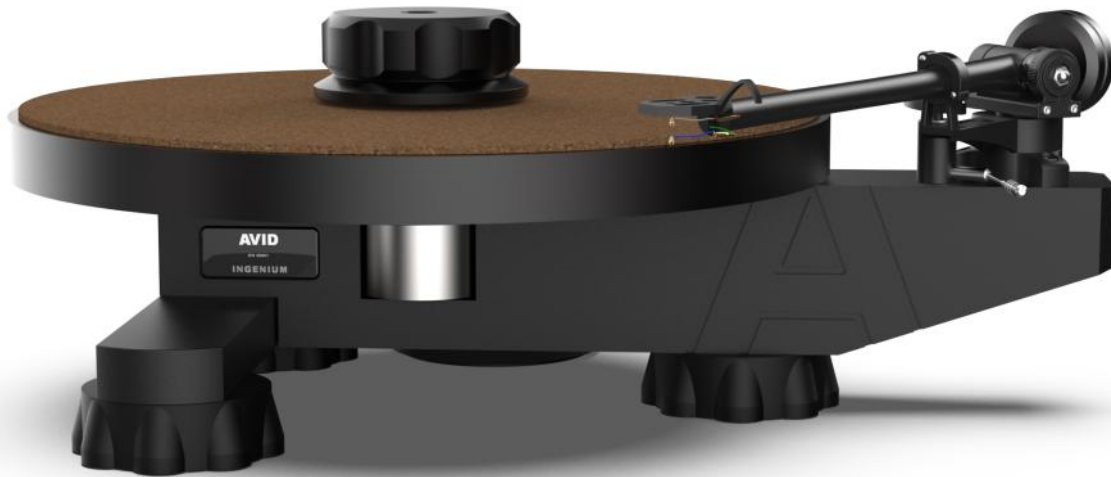
## Table of Contents

Section	Page
Welcome	3
Caution	3
Placement	3
Component List	4
Setting-up:	5
Position the Chassis	5
Inserting the bearing ball	5
Fitting the drive hub	5
The Motor	5
Connecting the Power Supply	6
Changing the platter speed	6
Attaching the platter	6
Tonearm	7
Using the clamp	7
Starting the turntable	7
Upgrades: Metal Platter Upgrade	8
Power Supply Upgrade	8
Troubleshooting	9
Specifications	10
Declaration of Conformity	10
Warranty	11

### **Extended 5 Year Warranty**

AVID is pleased to extend the normal warranty duration to 5-Years from the date of original shipping. This warranty is transferable in the unlikely event that you would sell this unit onto another party. Register your product at;

**[www.avidhifi.com/register](http://www.avidhifi.com/register)**



## ***Congratulations on purchasing your new AVID Ingenium SE.***

Using premium-quality materials and meticulous assembly to the highest industry standards, ensures that your AVID Ingenium SE will deliver many years of reliable, trouble-free musical enjoyment. Engineered for lasting performance and built with precision throughout, it is designed to provide a rewarding and reassuring ownership experience every time you listen.

Please read this manual carefully to ensure you understand all the features and functions.

### **Caution**

- **Turntables, tonearms and cartridges are fragile items, please take extreme care when moving, setting-up and using them.**
- **When cleaning, use only a soft, lint-free cloth. Take special care not to damage your chosen cartridge and its delicate stylus assembly.**
- **Always clip the tonearm back into its rest when changing records, to minimise the risk of damaging your chosen cartridge.**
- **Keep all packaging—you will need them if you need to return the item for service or upgrade at a later date.**

### **Placement:**

Turntables are very sensitive to vibration. While the Ingenium SE uses high mass and compliant feet to reduce unwanted resonance, correct placement remains essential for best performance.

1. **Use a level, stable support** A rigid shelf, table, or preferably a dedicated stand should be used. Lightweight, low-energy supports often perform best, with wall-mounted shelves providing excellent isolation from floor vibration. Keep the turntable away from power amplifiers and other heat or magnetic sources.
2. **Keep clear of loudspeakers** Placing the turntable too close to speakers can reduce sound quality and may cause acoustic feedback at higher volumes.
3. **Allow easy access** Position the turntable where the platter and motor can be accessed easily for setup and maintenance. Enclosed cabinets are generally not ideal.
4. **Avoid heat and sunlight** Direct sunlight and excessive heat can damage the finish and may warp records left on the platter.

## Component List

Before assembling your Ingenium SE, please ensure that all components for your selected turntable configuration are present, together with this manual, as pictured below. If any items are missing, please contact your dealer immediately.

### Ingenium SE Model Options:

**Option A:** All **BLUE** parts plus MDF Platter, Power Supply (A), Drive Belt x 1

**Option B:** All **BLUE** parts plus Upgrade Platter, Power Supply (A), Drive Belt x 1

**Option C:** All **BLUE** parts plus Upgrade Platter, Power Supply (B), Drive Belt x 2



Chassis with Tonearm



Record Clamp



Hub/bearing Assembly



Motor



Tonearm Counterweight



Bearing Ball



Mains Cable



Motor Cable



Power Supply (A)



Drive belt



Platter (MDF/Upgrade)



Power Supply (B)

## Setting-up:

Prepare the area where you plan to locate the turntable—make sure you have plenty of space around it to give you easy access.

### Position the chassis

The main chassis comes ready-assembled, with the feet and tonearm installed. Place the chassis on the surface you intend to use the turntable. Position the chassis so that the tonearm is easy to access.



### Inserting the bearing ball

Before assembly, clean the conical recess on the top of the shaft using a soft lint-free cloth. Place the bearing ball into the recess. **The bearing ball must be in place before continuing, otherwise permanent damage will be done to the sapphire.**

**NEVER PUT ANY LUBRICATION ON THE SAPPHIRE OR BEARING BALL AS THIS WILL CAUSE DAMAGE. THE BEARING IS SELF LUBRICATED FOR LIFE, NEVER ADD ANY ADDITIONAL LUBRICATION.**



### Fitting the Hub/bearing

Carefully lower the bearing assembly over the shaft—**do not allow the assembly to drop onto the shaft, as this might damage the Sapphire bearing.**

Once the bearing is in place, the bearing should initially spin freely, but once fully lubricated will cause drag, slowing the hub quite quickly—this is normal.



### The Motor

The motor needs to be located to the rear of the chassis. The centre of the motor spindle should be approximately 97mm (3 ¾") away from the centre of the hub assembly.

Take the drive belt, and place it around the hub, and then stretch it over the motor pulley. The smaller diameter is for 33.3 RPM, the larger for 45 RPM.

**EVERY TIME YOU FIT THE DRIVE BELT—MANUALLY ROTATE THE DRIVE HUB BY HAND TO ALIGN THE DRIVE BELT.**



## **Connecting the Power Supply**

The Ingenium SE uses an external power supply that incorporates the rotary start/stop switch. For best performance, position the power supply away from the tonearm to minimise any possibility of interference, making sure the connecting cable does not interfere with the position of the motor.

Connect one end of the motor cable to the rear of the power supply and the other end to the motor unit. Then connect the mains power cord.

When the power supply is switched on, the turntable will rotate at the selected speed and the front panel indicator light will illuminate.



## **Changing the Platter Speed**

The motor pulley has two grooves into which the belt can be placed—the larger diameter groove is for playing 45RPM records, and the smaller plays at 33.3RPM.

Any time you want to change the turntable speed, simply remove the platter (push down on the spindle, so that it disengages from the platter) and reposition the drive belt, replace the platter and rotate manually to align drive belt.

The turntable speed has been calibrated at the factory. You can accurately check the speed of the platter by using a strobe disk. A small speed adjustment is possible by altering the distance between the motor and the drive hub.



## **Attaching the Platter**

The platter fits over the hub assembly. Gently lower the platter over the hub assembly being careful to align the centre hole with the hub. You should take extra care if you have chosen to use the optional upgrade metal platter (*see page 8*).

### **Tonearm** *(see additional instructions)*

Ingenium SE tonearm is pre-installed and ready for cartridge setup. With your cartridge correctly mounted and the stylus guard removed, first ensure both the tracking force dial and bias adjustment are set to zero. Using a gentle twisting motion, slide the counterweight onto the rear of the tonearm until the arm floats level and is neutrally balanced.

Set the tracking force dial (in grams) to match the cartridge manufacturer's recommended tracking force. Use the supplied alignment gauge to fine-tune the cartridge position within the headshell.

To confirm accuracy, reset the tracking force dial to zero and check that the tonearm floats level. Adjust the counterweight if needed, then reapply the correct tracking force.



### **Using the Clamp**

Your Ingenium comes with a record clamp—this is designed to minimise any warps in the record, but also to help control vibrations within the record that adversely affect sound quality. The clamp should be used at all times.

Simply place the record over the spindle and then screw the clamp onto the spindle.

< **IMPORTANT** >

**Do this carefully to avoid cross threading which will damage the spindle thread.**

Do not use excessive force—hand-tight is adequate.

**ALWAYS STOP THE TURNTABLE WHEN CHANGING THE RECORD**



### **Starting the Turntable**

Rotate the switch on the power supply clockwise to start the turntable and anti-clockwise to stop.

## UPGRADES

The AVID Ingenium SE Turntable offers two upgrade options, available either at purchase or as retrofits later. Both deliver a clear improvement in sound quality and overall musical enjoyment.

### Metal Platter Upgrade

Replacing the standard platter, the metal upgrade adds significant mass, improving speed stability and overall performance. It delivers tighter bass, clearer treble, and a lower noise floor.

The underside of the metal platter has four studs which engage into corresponding holes on the drive hub. When fitting, make sure not to drop the platter as this might damage the sapphire bearing.



### Power Supply Upgrade

A dramatic improvement in sound quality is achieved with our bespoke-designed power supply taken directly from our Relveo model, eliminating the inconsistencies of mains power and enabling precise motor speed calibration.

We do not recommend using mains filters and suggest plugging directly into the mains supply. It is recommended that when not in use the unit be switched off, as this will extend the life of the internal components. There is no sonic benefit in leaving the unit permanently switched on.



### **Speed Adjustment:** *(watch our video guide)*

The speed is calibrated at the factory, however you may wish to check this sometimes, although there should be no drift from the locked speed. To check the speed you will need a strobe disc or alternative.

With the turntable playing, select which speed you wish to adjust and press and hold both PLAY and SPEED buttons together until the speed light flashes. The flashing light indicates adjustment mode is selected.

Pressing the PLAY button slows the platter and the SPEED button increases the speed. Once correct speed is achieved press both buttons again to lock.



*(watch our video guide)*

## TROUBLESHOOTING

The Ingenium SE is intentionally a straight-forward turntable, making set-up and use very simple. Perhaps, you may come across a problem, if so, please read the following to help find a solution

Fault	Solution
Turntable platter not rotating	<p>Check that the mains plug is correctly fitted and switched 'on', and the cable is fitted to the power supply which is switched 'on'.</p> <p>Check that the drive belt is fitted correctly around the hub and motor pulley and that the motor is correctly positioned.</p> <p>Check that the Platter is free to turn, and that no foreign object may be jamming it.</p>
No, or very quiet sound	<p>Check that the tonearm leads are connected to the amplifier, and that the correct input is selected.</p> <p>This turntable requires an amplifier with a built-in phono stage, or an optional external one. It will not function if connected directly to a standard line-level input.</p>
Loud humming noise coming from speakers	<p>This is probably the result of an earth issue, and is best resolved by discussing the issue with your dealer.</p>
Turntable running slightly fast or slightly slow or varying	<p>Adjust the tension of the belt by moving the motor. If the speed randomly varies, try removing the belt and cleaning it with a dry lint-free cloth to remove any contaminants.</p>
Distorted sound	<p>Carefully, clean the stylus—use a stylus cleaning brush to remove any build up of dust and fluff. Remember the stylus will eventually wear, and should be replaced (with normal use, every one to two years). Using a worn stylus will result in poorer sound quality, and eventually permanent damage to your records.</p>

**If you ever have any issues with your AVID equipment that you are unable to resolve yourself, please, in the first instance, contact your dealer.**

## Specifications

DRIVE:	BELT DRIVE
SPEEDS:	33.3 & 45.0 RPM
PLATTER MASS:	2.5KG (Metal Upgrade 5.5KG)
BEARING:	INVERTED STAINLESS STEEL
THRUST POINT:	TUNGSTEN CARBIDE/SAPPHIRE
SUSPENSION:	ELASTOMER
TOEARM:	AVID TA-3
MOTOR:	24V 12mNm AC synchronous
POWER SUPPLY:	STD or UPGRADE OPTION
VOLTAGE INPUT:	100-240VAC 50/60Hz
POWER CONSUMPTION:	<4 Watts Max.
DIMENSIONS:	TURNTABLE: 370 x 305 x 130mm (WxDxH overall) STD PSU: 160 x 160 x 60mm UPGRADE PSU: 160 x 290 x 60mm
NET WEIGHT:	TURNTABLE: 5.9KG (13LB) STD PSU: 1.5KG (3LB) UPGRADE PSU: 2.3KG (5LB)
PACKED DIMS & WEIGHT:	OPTION A - 510 x 420 x 260    11.1KG (25Lbs)    (W x D x H) OPTION B - 510 x 420 x 260    14.5KG (32Lbs) OPTION C - 510 x 420 x 260    15.3KG (34Lbs)

## EC DECLARATION OF CONFORMITY

We the Manufacturer, **AVID HIFI Limited**

Bicton Ind. Park, Kimbolton, Cambridgeshire. PE28 0LW (UK)

TEL: +44 (0)1480 869900 / Email: info@avidhifi.co.uk / Web: www.avidhifi.com

Acknowledge our sole responsibility, that the product:

KIND OF EQUIPMENT: **Turntable/Record Player**

TYPE DESIGNATION: **INGENIUM** (All Variants)

In accordance with the EMC Directive **2014/30/EU** is in compliance with the following norm(s) or document(s):  
Technical regulations: **EN 55032:2015+AC:2016 / EN 55035:2017 EN 61000-3-2:2014 / EN 61000-3-3:2013**

&

In accordance with the Low Voltage Directive **2014/35/EU** is in compliance with the following norm(s) or document(s):  
Technical regulations: **EN 62368-1:2014**

&

Is in conformity with Directive **(EU) 2015/863** Restriction of Hazardous Substances in electrical and electronic equipment.

**Conrad Mas** (Managing Director)

Date: **26<sup>th</sup> May 2026**

## Warranty Statement UK Residents

**AVID HIFI** Limited products are warranted against defects in materials and workmanship for a period of two years from the original date of purchase, or no later than three years from the date of shipment to an authorized **AVID** agent, whichever ever comes first, extending to five years subject to the product owner having submitted the Registration form ([www.avidhifi.com/register](http://www.avidhifi.com/register)). Also the following conditions being observed.

- The product must have been purchased through an authorized **AVID** dealer
- By default, the warranty is in favour of the original purchaser only, however warranties are transferable providing the new owner completes the online product registration form. In this case, warranty obligation will pass from dealer to manufacturer.
- During the warranty period, **AVID** will repair, or replace any defects due to material or workmanship, without charge for parts or labour.
- Should product need to be returned, a written description of the defect and a photocopy of the original purchase receipt must accompany it. Receipts must show the model, serial number, date of purchase, name and address of purchaser and authorized dealer and the price paid.
- Returned product must be packed in the original packing and returned to **AVID** or original dealer by the customer at his/her expense. **AVID** will pay return freight of its choice.
- The warranty is void if the product has been used or handled other than in accordance with the instruction manual supplied, abused or misused, damage by accident or neglect or in being transported, or the defect is due to the product being repaired or tampered with by anyone other than **AVID** or a dealer with prior authorization.
- The warranty is void if the product serial number has been removed, altered or made illegible.
- The warranty is void if the product has been taken out of the country of purchase.
- **AVID** shall not be held liable for incidental or consequential damages of any kind arising from the sale or use of its products.
- The warranty applies to ex-demonstration product, using manufacture date as purchase date.
- Where the product is sold under a consumer transaction (as defined by the Sale of Goods Act 1979) the statutory rights of the purchaser are not affected by this warranty.
- Products are sold on the basis of specifications applicable at the time of sale. **AVID** shall have no obligation to modify or to update products once sold.

### Outside UK

**AVID** has formal distribution in many countries throughout the world. In each country the **AVID** importer has contractually accepted the responsibility for the product warranty. Warranty should normally be obtained from the importing agent or distributor from whom you obtained your product. In the unlikely event of service required beyond the capability of the importer, **AVID** will, of course, back up the warranty.

- Where product has been either supplied directly or there is no current distributor, **AVID** accepts responsibility for the warranty period. Returned product must be packed in the original packing and returned to **AVID** by the customer at his/her expense. **AVID** will pay return freight of its choice. The warranty is only valid in the country of purchase.
- Products outside their original destination requires that units with remaining warranty be returned to the country of purchase for the warranty to be valid. Customer is responsible for freight both ways and all associated import and export charges.
- Foreign distributors are not required to provide warranty service, repair or change AC mains voltage on units that they did not originally import and sell.
- Foreign distributors may at their discretion offer service for a fee.

MISCELLANEOUS. ANY IMPLIED WARRANTIES RELATING TO THE ABOVE PRODUCT SHALL BE LIMITED TO THE DURATION OF THIS WARRANTY. THE WARRANTY DOES NOT EXTEND TO ANY INCIDENTAL OR CONSEQUENTIAL COSTS OR DAMAGES TO THE PURCHASER.

WARRANTOR. Inquiries regarding the Limited Warranty may be sent to the following address:  
**AVID HIFI** Limited. Bicton Industrial Park, Kimbolton, Huntingdon. PE28 0LW ENGLAND



# AVIDHIFI



## AVID HIFI Ltd

Bicton Industrial Park,  
Kimbolton, Huntingdon,  
Cambridgeshire.

PE28 0LW  
ENGLAND

Tel: +44(0)1480 869 900 — Website: [www.avidhifi.com](http://www.avidhifi.com) - Email: [info@avidhifi.co.uk](mailto:info@avidhifi.co.uk)

Company Registered No: 05435528 — VAT Registration No: GB 694 9858 48 — Directors: C. Mas & S.J. Mas

V260527